

8d Hodge Bower, Ironbridge TF8 7QG



Offers in excess of £160,000

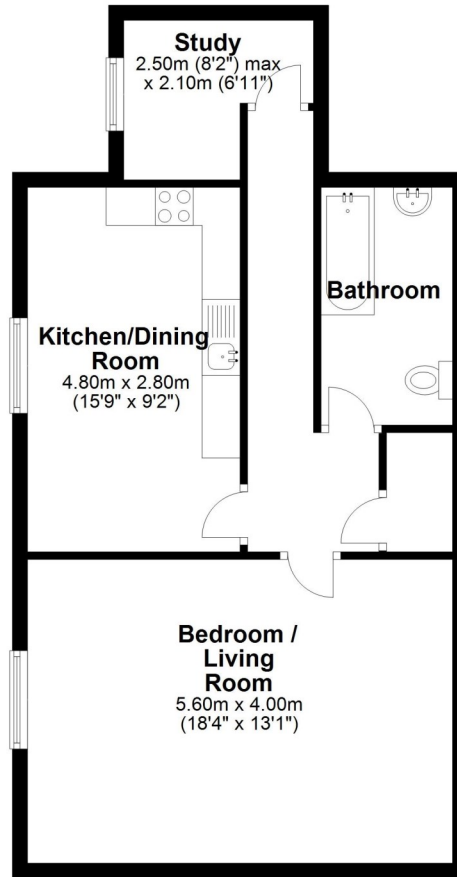
Available to landlords only with tenant in situ paying £575 pcm. Stylish contemporary apartment situated within the Ironbridge Gorge. One of just seven available properties in the recently converted former Crown Inn on Hodge Bower. This attractive second floor apartment offers kitchen/diner with integrated appliances, bedroom/living room, study with lovely views and bathroom. The parking area is located to the front with views over towards the River Severn. Lots of local walks in the area with Ironbridge's many bars and restaurants within easy walking distance. Telford Town Centre is approximately 15 minutes drive, with its range of shopping and leisure facilities, train station and access to the M54 and wider motorway network.





Ground Floor

Approx. 55.8 sq. metres (600.9 sq. feet)



Total area: approx. 55.8 sq. metres (600.9 sq. feet)

Tenure Leasehold

Council tax Awaiting confirmation

Fixtures & Fittings Where specifically mentioned in these sales particulars are included in the sale price.

N.B Please note, that none of the services, heating systems or any appliances at this property have been tested, therefore no warranty can be given or implied as to their working order

These particulars do not constitute or form a part of any contract. Whilst Harwood Estate Agents and their employees take every care in the preparation of these particulars they hereby state both on behalf of themselves and the vendor that no intending purchaser should rely on any of the statements of representation of fact and the intending purchaser should make his/her own inspection and enquiries in order to satisfy himself/herself of their authenticity and no responsibility is accepted for any error or omission herein.

Details prepared : 19th August 2020